

A methodology for obtaining by measurements the transformer physical-circuitual model parameters

Abstract. Modeling a transformer usually requires all its construction data, which is very difficult to obtain for the units in operation; for new transformers manufacturers are not usually willing to provide this information. This paper presents a procedure to obtain the parameters of the transformer physical-circuitual model based on data obtained from external measurements, without need for design data. This was done by using different tests, some routine tests like losses and other special tests such as frequency response or FRA. It is also presented the application of the procedure to obtain the model of a 15-KVA 13200 / 244 V single-phase transformer, and its use to simulate the frequency response.

Streszczenie. W artykule zaprezentowano procedurę określania parametrów modelu transformatora na podstawie pomiarowych danych eksperymentalnych. Przedstawiono przykłady testów rutynowych jak i specjalnych. Uzyskane wyniki sprawdzono na przykładzie transformatora 15-KVA 13200/244 V. (Metodologia eksperymentalnego określania parametrów modelu transformatora)

Keywords: Transformer, diagnostic tests, equivalent circuit, parameters, frequency response analysis.

Słowa kluczowe: transformator, model transformatora, pomiary

Introduction

The model is "an approximation, representation, or idealization of aspects related to the structure, behavior, or operation of a real-world process, concept, or system" [1]. Transformer modeling is focused on from different perspectives, finding a wide panorama in the numerous and diverse research works carried out, which shows the complexity of the theme [2],[3],[4],[5],[6],[7],[8].

Transformer model parameters are usually obtained from the physical transformer characteristics, implying its dismantling or working in partnership with the manufacturer that has the design and construction information; this is quite difficult because manufacturers usually do not provide information on designs and materials used in the construction of their transformers.

Alternatives have been proposed to build the transformer model by using data from field tests [6], [7], [8], and [9], which makes it viable to obtain the model for installed transformers. This work shows a procedure to obtain the parameters for a physical extended circuitual classic transformer model, where it is assumed that:

- The parameters are concentrated.
- The parameters are not frequency dependent.

Transformer Circuit Physical model

The transformer at low frequency

The operation principle of the transformer at low frequency (60-50 Hz) and without load is shown in Fig. 1, where an alternating voltage on the primary side creates a time-varying flow that magnetically concatenates the two windings.

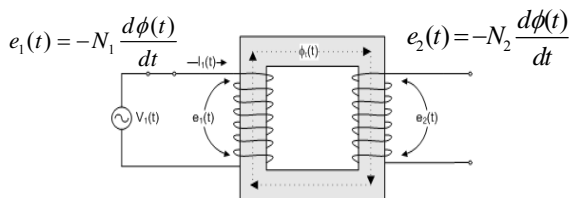


Fig. 1. Transformer without load.

When the transformer is without load, the time-varying flow is created by the current flowing through the primary winding, given that this current is very small, winding losses and leakage flux are neglected. Assuming that all the flux is concentrated in the magnetic core (R_{exc} - L_{exc}), the equivalent transformer circuit is shown in Fig. 2.

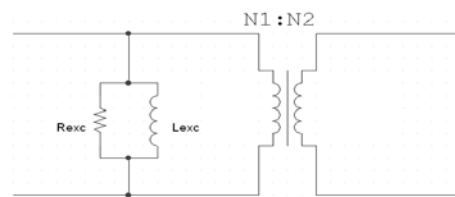


Fig. 2. The no-load transformer circuit (50-60 Hz).

If the secondary is short-circuited and a voltage is applied in the primary so that nominal currents I_1 and I_2 circulate, which are much higher than the magnetization; the effects of the windings (R_H , L_H , R_L , L_L) are now dominant in the circuit and the magnetizing branch is neglected, Fig. 3.

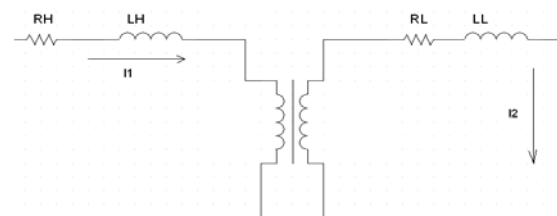


Fig. 3. The short-circuited transformer circuit (50-60 Hz).

For the transformer with normal load, the two previous conditions should be considered, leading to the equivalent circuit shown in Fig. 4.

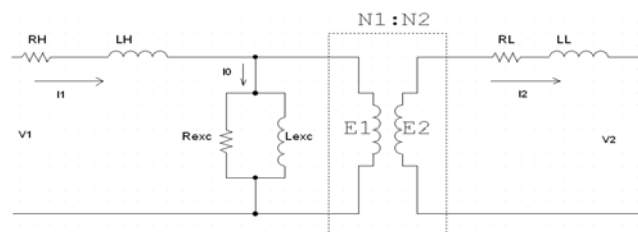


Fig. 4. The normal load transformer circuit (50-60 Hz).

The transformer at mid frequencies

If the transformer is analyzed at medium frequency, the capacitances between windings (C_{HL}) and from these to earth (C_H and C_L) became important, as well as the series winding capacitances or internal capacitances Fig. 5.

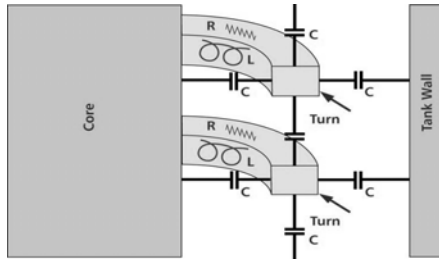


Fig. 5. Internal winding capacitances.

The transformer circuit is modified at high frequency by the effect of the capacitances mentioned, along with the capacitance associated with the magnetic core sheets or excitement capacitance (C_{exc}). The circuit transformer for medium frequencies will be the shown in Fig. 6 which is known as the frequency extended classic physical-circuitual transformer model [9], [10], [11].

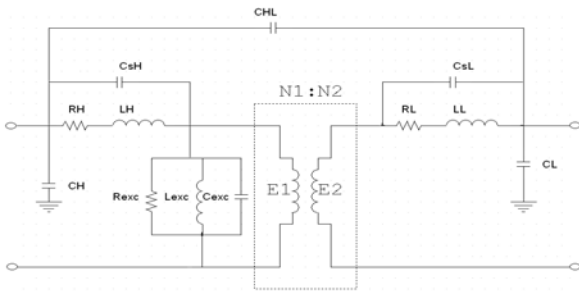


Fig. 6. The frequency extended classic physical-circuitual transformer model.

For high frequencies, the circuit components of Fig. 6 should be considered distributed parameters and also frequency dependent.

Procedure for obtaining the model parameters

The parameters for the model in Fig. 8 model can be obtained by external measurements [9], [12], using the results of the following tests:

The no-load test

In this test, a voltage of 60 Hz AC is applied over one transformer side (usually the high voltage side), while the other end is in open circuit. Neglecting the winding losses and assuming no leakage flux, Fig. 7 shows the equivalent no-load transformer circuit at low frequency, where I_0 is the total current, I_m the current necessary to generate the core magnetic flow, and I_{fe} the current due to the losses in the magnetic material.

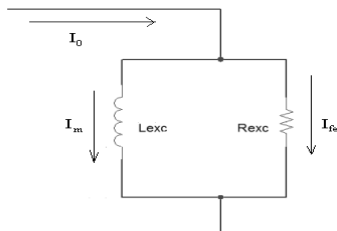


Fig. 7. The no-load current (50-60 Hz).

From the values of voltage V , current I_0 , and active losses W , measured in the test, resistance (R_{exc}) and excitation inductance (L_{exc}) values are determined. The R_{exc} resistance is found from the active losses:

$$(1) \quad R_{exc} = \frac{V^2}{W}$$

Having R_{exc} , the I_{fe} current can be obtained and the magnetizing current I_m can be calculated:

$$(1) \quad I_m^2 = I_0^2 - \left(\frac{V}{R_{exc}} \right)^2$$

Knowing the magnetization current I_m , the excitation inductance (L_{exc}) can be calculated:

$$(2) \quad L_{exc} = \frac{V}{2\pi f * \sqrt{I_0^2 - \left(\frac{V}{R_{ex}} \right)^2}}$$

Open circuit test in mid frequencies

The C_{exc} magnetizing capacitance begins to take effect at frequencies above the nominal (Fig. 8), reaching the condition of resonance with the excitation inductance L_{exc} , at a frequency value denominated as F_{n_Open} .

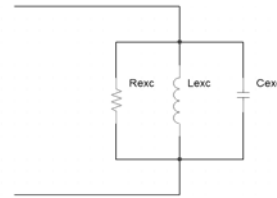


Fig. 8. Branch magnetization at mid frequency.

The resonance frequency (F_{n_open}) can be found from the open circuit frequency response test (Fig. 12), and with this value C_{exc} can be calculated:

$$(3) \quad C_{exc} = \frac{1}{(2\pi * f_{n_open})^2 * L_{exc}}$$

Winding resistance test

In this test a DC voltage is applied to one transformer winding and the current is measured, with the other windings open. With the current, the winding resistance values can be calculated (r_{DC}).

$$(4) \quad r_{DC} = \frac{V_{DC}}{I}$$

The transformer ratio test

The transformation ratio test gives the turns ratio between high-voltage and low-voltage windings. This "a" relationship is used to refer to the parameter values from one winding to another.

Leakage reactance test (short circuit)

In this test, a frequency sinusoidal voltage is applied to a transformer winding (usually high voltage), while the other winding is short-circuited, as shown in Fig. 9. The currents must be equal to or close to the nominal values.

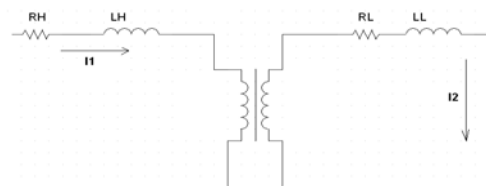


Fig. 9. The transformer under short-circuit condition.

The core effect is negligible because the excitation voltage is nearly zero. When measuring the resistance of a winding, the other winding resistance will be present, but both values are referred to the measurement side, i.e. the high voltage side in Fig. 10.

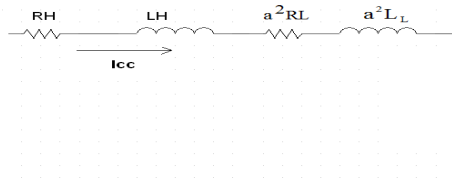


Fig. 10. Transformer short-circuit condition referred to the high voltage side.

With the total current I and the measured active W_{cc} loss values, the total AC resistance can be calculated (R_{H_AC} in the high voltage case):

$$(5) \quad R_{H_AC} = \frac{W_{cc}}{I^2}$$

But the R_{H_AC} resistance seen from the high voltage side involves the resistance of both windings:

$$(6) \quad R_{H_AC} = R_H + a^2 R_L$$

It can be assumed that the relationship between the values of DC resistance in (r_{L_DC} and r_{H_DC}) is approximately equal to the AC resistance ratio (R_H and R_L) [13], [14]:

$$(7) \quad \frac{R_L}{R_H} = \frac{r_{L_DC}}{r_{H_DC}}$$

From (7) and (8), the value of R_H can be found:

$$(9) \quad \text{With } R_H, \text{ it can be found } R_H = \frac{R_{H_AC}}{1 + \left[a^2 * \left(\frac{r_{L_DC}}{r_{H_DC}} \right) \right]} \text{ be found } R_L \text{ (Eq.7).}$$

The equivalent inductance L_{Heq} can be calculated using Eq. (10).

$$(8) \quad V = Z * I = \sqrt{(R_{H_AC})^2 + (2 * \pi * f * L_{Heq})^2} * I$$

The equivalent inductance L_{Heq} , involves the low side and high side windings:

$$(9) \quad L_{Heq} = L_H + a^2 L_L$$

Assuming for the inductances the same relationship that for DC resistances [13], [14]:

$$(10) \quad \frac{r_{L_DC}}{r_{H_DC}} = \frac{L_L}{L_H} \quad (12), \text{ the high voltage winding inductance } L_H, \text{ can be calculated (Eq 13):}$$

$$(11) \quad L_H = \frac{L_{Heq}}{1 + \left[a^2 * \left(\frac{r_{L_DC}}{r_{H_DC}} \right) \right]}$$

Once L_H is obtained, it can be found L_L Eq. (11).

Transformer test short-circuited in high frequency

When the transformer is in short-circuit condition and the frequency increases, the value associated with the windings series capacitive reactance decreases while their inductive reactance increase, until they reach resonance condition. When the short circuit is at the low voltage side the C_{SL} effect is canceled, only impacting on the C_{SH} capacitance (Fig. 11). The reverse condition occurs if the short circuit is at the high voltage side.

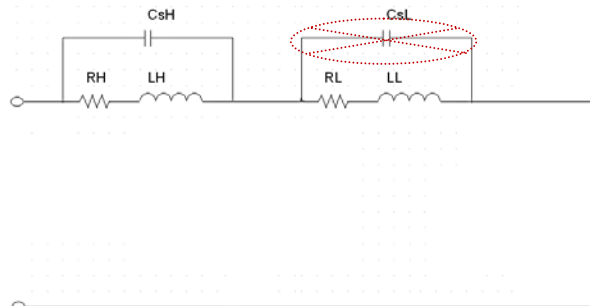


Fig. 11. Equivalent circuit short-circuited in high frequency

The short-circuit resonance frequency, F_{n_short} , can be found in the transformer frequency response curves (Figures 14 and 15). Given that L_H and L_L are known, the C_{SH} and C_{SL} values can be calculated by using Eqs. 14 and 15, respectively.

$$(12) \quad C_{sH} = \frac{1}{(2\pi * f_{H_short})^2 * L_H}$$

$$(13) \quad C_{sL} = \frac{1}{(2\pi * f_{L_short})^2 * L_L}$$

The Capacitance test

With this test, the transformer total capacitances C_H , C_L , and C_{HL} are measured directly.

The SFRA test

The seep frequency response test, or SFRA, provides information about the impedance or admittance transformer over a wide frequency range. It is a tool for evaluating the transformers mechanical condition and it can be used to identify the high side and low side winding resonant frequencies [15], [16], [17] y [18].

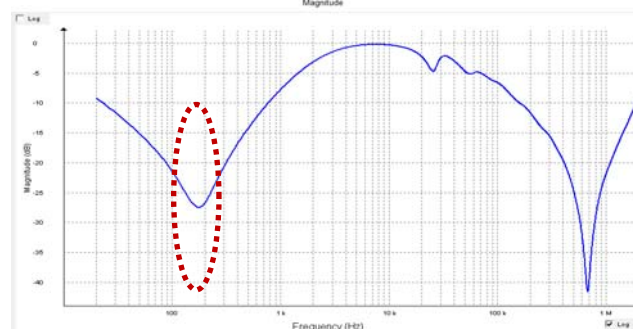


Fig. 12. Open circuit resonant frequency (F_{L_open}).

Although the SFRA test can be performed with different connection configurations [15]19], for finding the resonant frequencies, it can be used the SFRA curves obtained from the high side under open circuit condition and from the low side under short-circuit condition. The Fig. 12 shows the frequency response obtained at the high side winding with the low side under open circuit condition, where the first

resonant point corresponds to the open circuit resonance frequency F_{L_open} [20], [21].

Fig. 13 shows the frequency response obtained at the high side winding with the low side under short-circuit condition, where the resonant point corresponds to the short circuit resonance frequency F_{L_short} [20], [21].

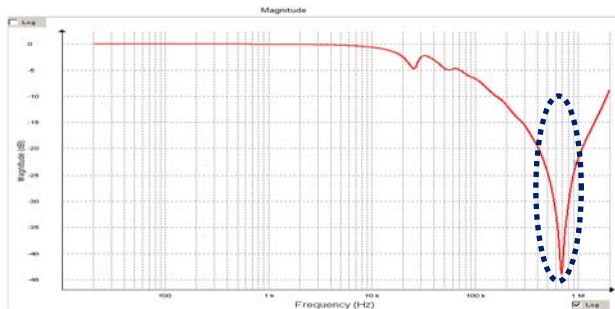


Fig. 13. Short circuit resonant frequency (F_{L_short}).

Model case

The procedure mentioned above was applied to find the model for a single-phase transformer 13200/244 V, 15 KVA. Once all the circuit model parameters were obtained (Fig. 6), the model was implemented in the Matlab simulation tool. Fig. 14, shows the measured and the modeled frequency response curves, it can be observed that at low and medium frequencies the measured and the modeled curves have a good approximation.

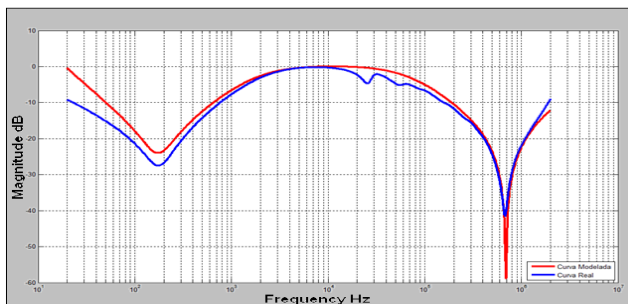


Fig. 14. FRA curve in open circuit, modeled and simulated

Conclusions

A simple procedure was developed to obtain the transformer physical circuit model parameters, based on external measurements.

This model can be used to obtain the transformer frequency response, showing acceptable performance when comparing the modeled and the measured curves in the range of low and medium frequencies.

The transformer physical-circuit model permits establishing a direct relationship between its parameters and the transformer physical elements, which can be used to associate the SFRA curve variations with real transformer changes.

Although the model must be adjusted, it can become a useful tool for supporting transformer diagnostic work, particularly for use in SFRA application.

ACKNOWLEDGMENTS

The authors express their gratitude to COLCIENCIAS and EPSA for their support for this work.

REFERENCES

[1] IEEE Std. 610.3 -1989. IEEE Standard Glossary of Modeling and Simulation Terminology. Standards coordinating committee, of the IEEE computer society. January 1, 1989.

[2] J. A. Martinez, B. A. Mork. "Transformer Modeling for Low- and Mid-Frequency Transients—A Review". IEEE Transactions on Power Delivery, Vol. 20, No. 2, April 2002.

[3] Pleite J., Ollás E., Barrado A., Lázaro A., Vázquez J. "Transformer Modeling for FRA Techniques". IEEE-PES Transmission and Distribution Conf./Exhib. 2002 Asia Pacific.

[4] C. C. Brozio. "Wideband Modeling and Parameter Estimation of Two-Winding Transformers". Doctoral Thesis. University of Stellenbosch. South Africa. 1998.

[5] E. E. Mombello. "Representation circuit model for transient behavior during the resonance transformer with consideration of the losses". Doctoral Thesis. Universidad Nacional de San Juan, Argentina, 1998.

[6] E. Bjerkan. "High Frequency Modeling of Power Transformers". Doctoral Thesis. Norwegian University of Science and Technology, Norway. 2005.

[7] K. Ragavan. "An Efficient Solution to Generalized Model of a Transformer Winding and Localization of Discrete Changes Based on Measurements". Doctoral Thesis. Indian Institute of Science. India. 2006.

[8] C. González García. "Modeling Discussion and Analysis of Power Transformer from its frequency response". Master's thesis, Universidad Carlos III de Madrid, 2009.

[9] Long Pong, "Modeling A Transformer With Double M Series Instruments" 2004. Double Engineering Company.

[10] J. Pleite G. "Modeling tool for predictive maintenance of transformers based on the Analysis of Frequency Response". Thesis PhD. Universidad Carlos III de Madrid 2000.

[11] E. Al-Ammar and G.G. Karady, "Transfer function analysis using STFT for improvement of the fault detection sensitivity in transformer impulse test," IEEE Power Engineering Society General Meeting, pp. 534-541; 2005.

[12] Carlos A. Mesa. "Obtaining the parameters of a physical model of a transformer of circuit". Undergraduate Thesis 2010. Universidad del Valle. Faculty of Electrical Engineering. Research Group High Voltage.

[13] Bouchard, Réal-Paul "Électrotechnique" Quatrième Éditions, Cours 3.408, Département de génie électrique, École Polytechnique de Montréal, Canada, 1987, page 29.

[14] Vembu Gourishankar, "Electromechanical energy conversion", representation and engineering services, SA Mexico 1975.

[15] J. Pleite, C. González, "Seminar FRA, diagnosis of transformers based on Frequency Response", Universidad Carlos III de Madrid 2008.

[16] Frequency Response Analysis on Winding Deformation of Power Transformers. The Electric Power Industry Standard of People's Republic of China.

[17] Document 15182-2005.IEEE PC57.149/D8, Draft trial use. "Guide for the Application and Interpretation of Frequency Response Analysis for Oil Immersed Transformers". 2009.

[18] Working Group A2.26, CIGRE, Brochure 342. "Mechanical condition assessment of transformer windings using Frequency Response Analysis (FRA)". April 2008.

[19] IEC 14/626CD (Committee Draft) 60076-18 Ed.1: Power transformers - Part 18: "Measurement of frequency response". November 2009.

[20] GRALTA, Research Group. "Evaluation of the mechanical condition of the transformers by analyzing the frequency response - use of physical and circuit model". Universidad del Valle, technical Report, 2010.

[21] G. Aponte, C. E. Castaño, C. González, A. Garcia, "The use of FRA technique for diagnosis of transformers". International conference on high voltage isolation. ALTAE, Medellín, Colombia. 2009.

Authors: Prof. Guillermo Aponte M.,
E-mail: guillermo.aponte@correounivalle.edu.co
Prof. Héctor Cadavid Ramírez
E-mail: hector.cadavid@correounivalle.edu.co
Student Ph.D, Eduardo Gómez Luna,
E-mail: eduardo.gomez@correounivalle.edu.co
Universidad del Valle, Cali-Colombia, Calle 13 #100-00.
Prof. Juan Carlos Burgos., icburgos@ing.uc3m.es
University Carlos III, Madrid-España. Avenida de la Universidad
30, 28911-Leganés